

# Meet the new “W Brake”\* standard for Transit Bus and Motor Coach



**63115B**

Optimized for transit applications



Vent windows for heat and friction residue release

Designed for improved drum durability in applications with frequent duty cycles

High performance material and quality machining

## Introducing the **NEW advanced technology** Webb 63115B

- Machined from the same premium material as the well-established Webb 64115B brake drum
- Advanced engineering for optimized performance and durability in transit applications
- Made in the USA and backed by the best warranty in the business
- Your Webb expert can help you choose the right drum for your bus or motor coach application

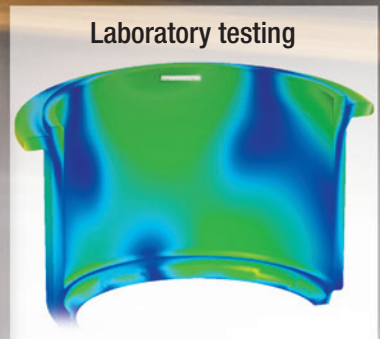
Part Number	63115B
Mount:	Outboard
Brake surface diameter:	14.5"
Overall depth:	12.81"
Brake surface (flat):	10.5"
Inner pilot diameter:	12.75"
Bolt circle diameter:	11.25"
Bolt holes (quantity):	10
Bolt holes (size):	1.31"

\* “W Brake” is a Meritor® brake type used here for description purposes only.



### Field testing

Accumulated data gathered in “real world” field testing was used to optimize the design for transit applications.



### Laboratory testing

The Webb Engineering Team achieved this advanced design working closely with customers through five years of R&D employing computer aided design, finite element analysis, laboratory dynamometer testing, electronic monitoring, duty cycle data accumulation and extensive “real world” field testing.



[www.webbwheel.com](http://www.webbwheel.com)

Contact your local Webb Wheel Products supplier for training that can cut your operating costs!



Scan this QR code to get certified on brake drum selection and wheel-end installation, and we'll send a token of our appreciation.

